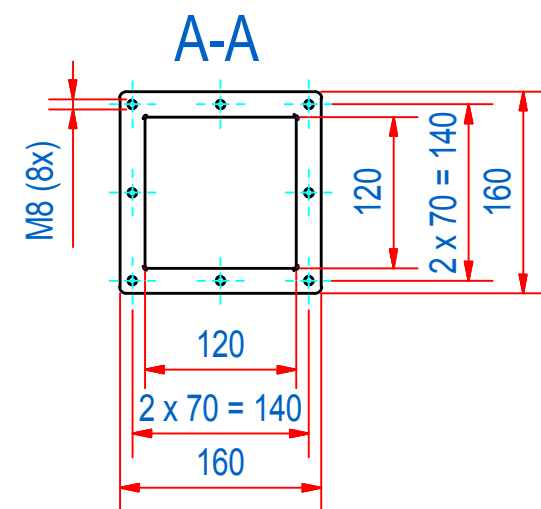
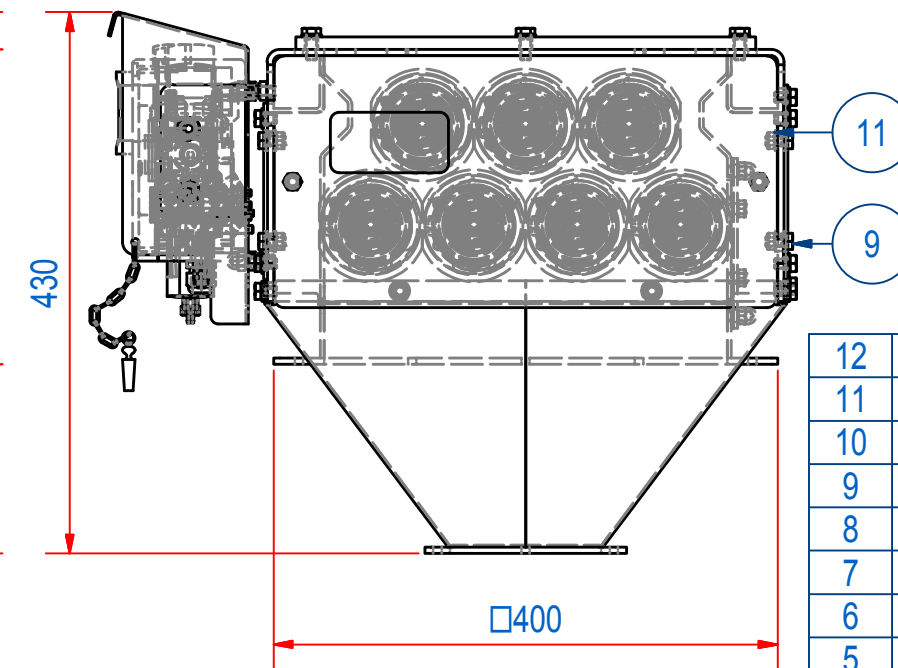
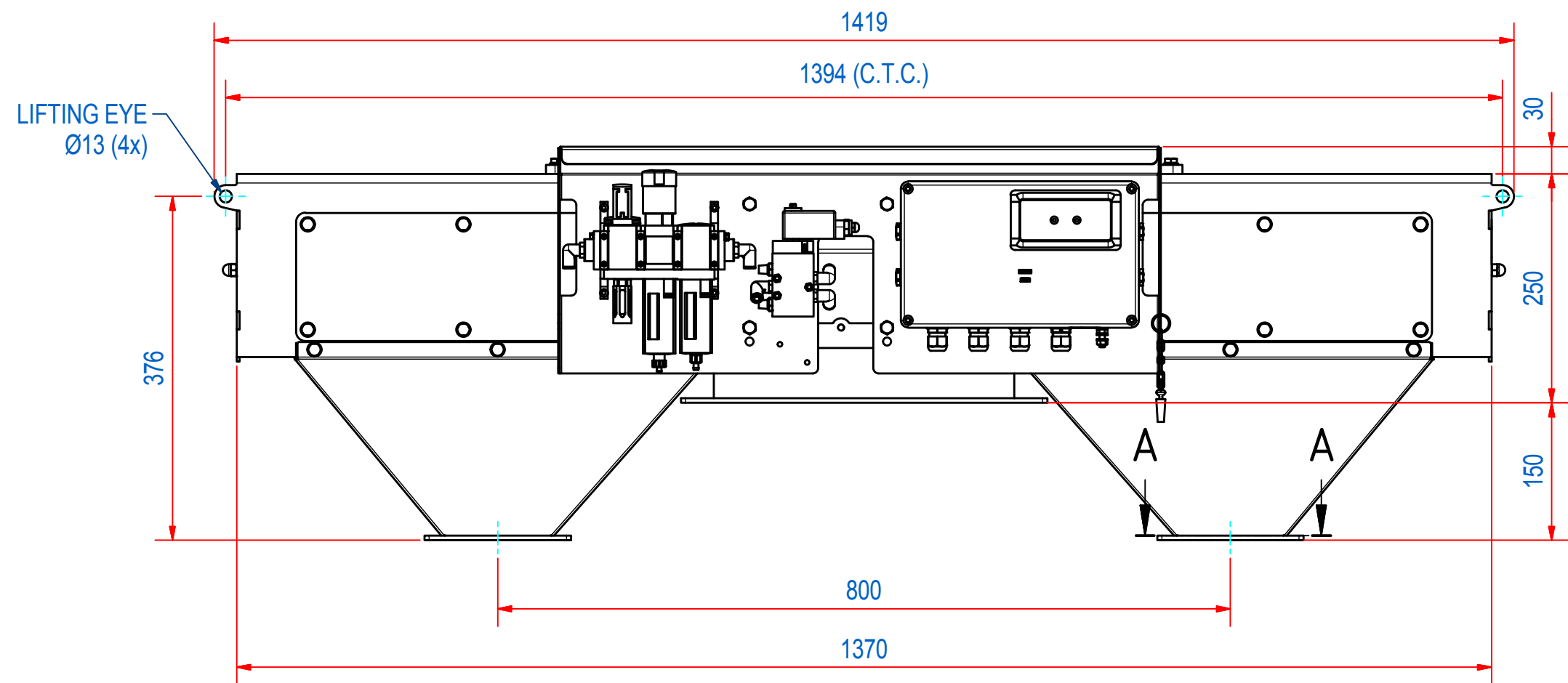
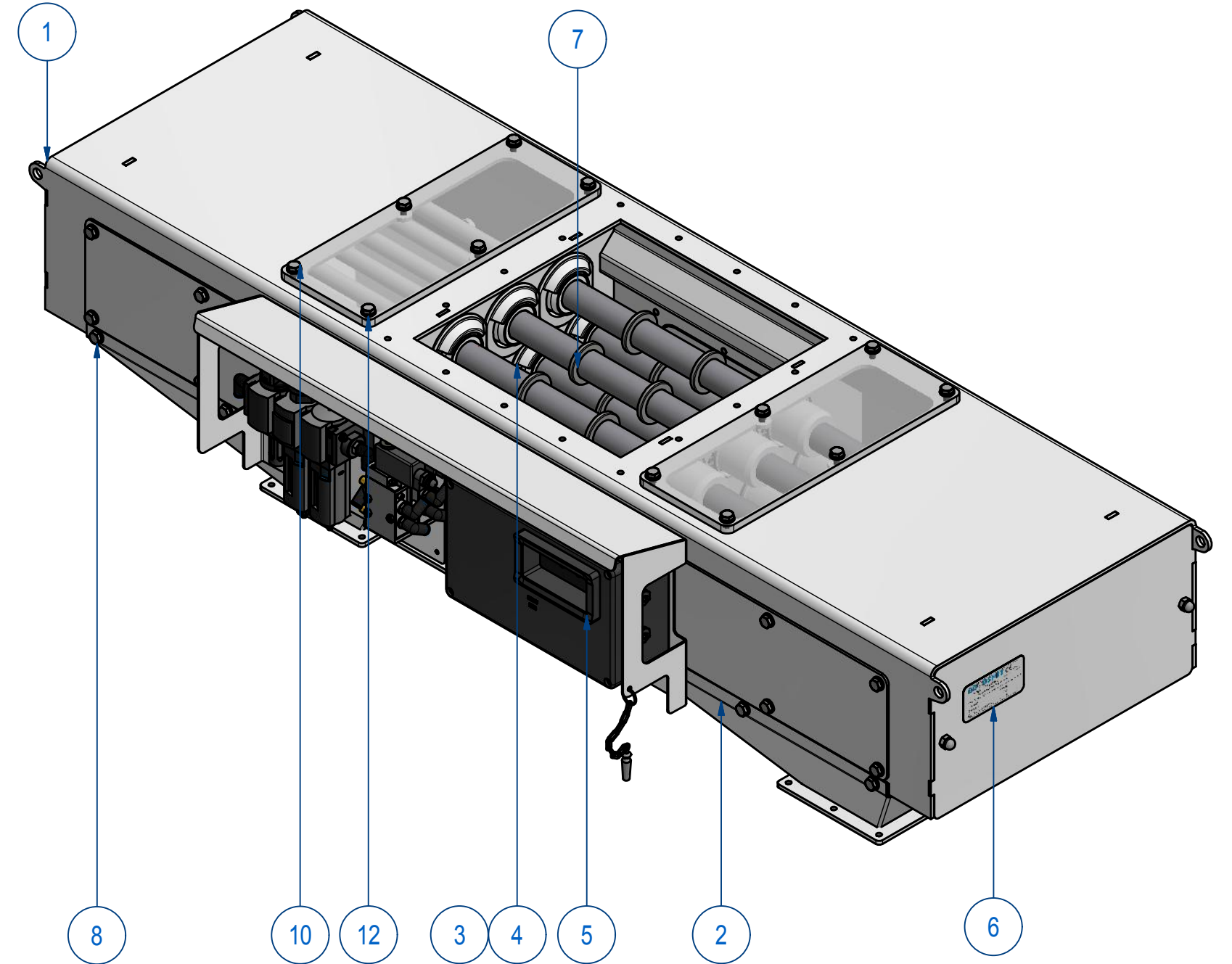
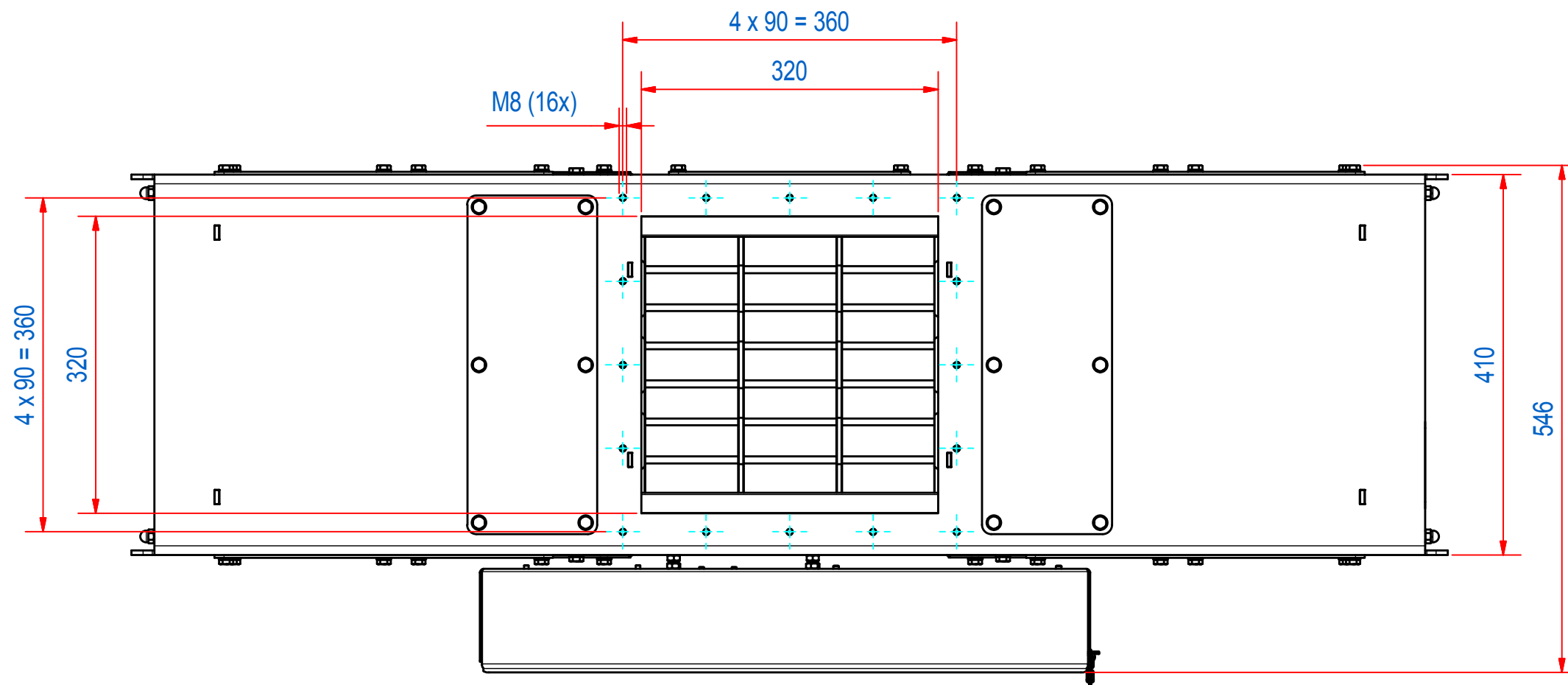
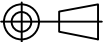



3		2		1
REV	DATE	BY	DESCRIPTION	
-	10-1-2017	AvD	REFERENCE DRAWING SECC320101	



12	72	70.0200008	WASHER M 8- A2	M 8
11	8	60.0200008	NUT, HEX M8 - A2	M8
10	12	50.1208020	BOLT, HEX M8x20 - A2	M8x20
9	8	50.1208016	BOLT, HEX M8x16 - A2	M8x16
8	44	50.1208012	BOLT, HEX M8x12 - A2	M8x12
7	7	SECC320916	CC320 MAGNET ROD D34 NdFeB	
6	1	E0006894	STICK. SECC ATEX II 1/2 D T130	
5	1	A140022	SECC CONTROL UNIT EX II 2D	
4	14	A120689	CC000 SLIDE RING EC1935	
3	14	A120673	RETAINING RING D65 CC000	
2	2	A240505	CHUTE CC3232	
1	1	A240503	CLEANFLOW CC3232	
ITEM	QTY	PART NUMBER	DESCRIPTION	Dimensions
RAW	1			
MAT.	QTY	MAT. NUMBER	MAT. DESCRIPTION	LENGTH (mm) WIDTH (mm)
		Sheet: A2	Extra info: Cleanflow magnet static Auto cleaning - Continuous	General tolerance: ISO 2768- mK
Drawn: AvD	Weight (kg): 145,5			Drawn according: ISO268; ISO1101; ISO2553
Date: 10-1-2017	 MAGNETIC SYSTEMS		Status: Standard	
Spare part: False			Customer reference number:	
Quick search: CC3232			File number: SECC320201	Rev:
Description: SECC-3232-07S-N-Ex-F1E-L-B-B			Part number: SECC320201	Rev: -